

Memorial Garden Update Spring 2020

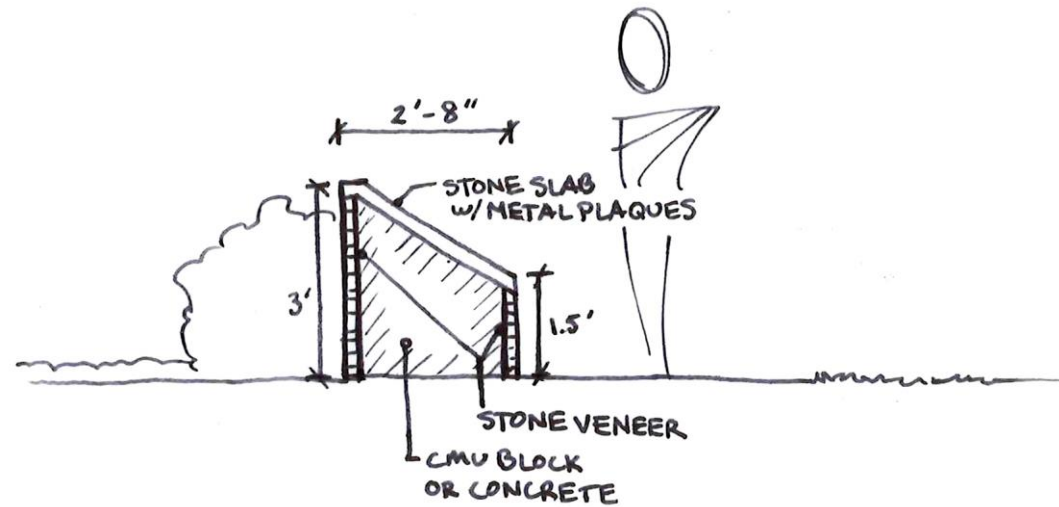
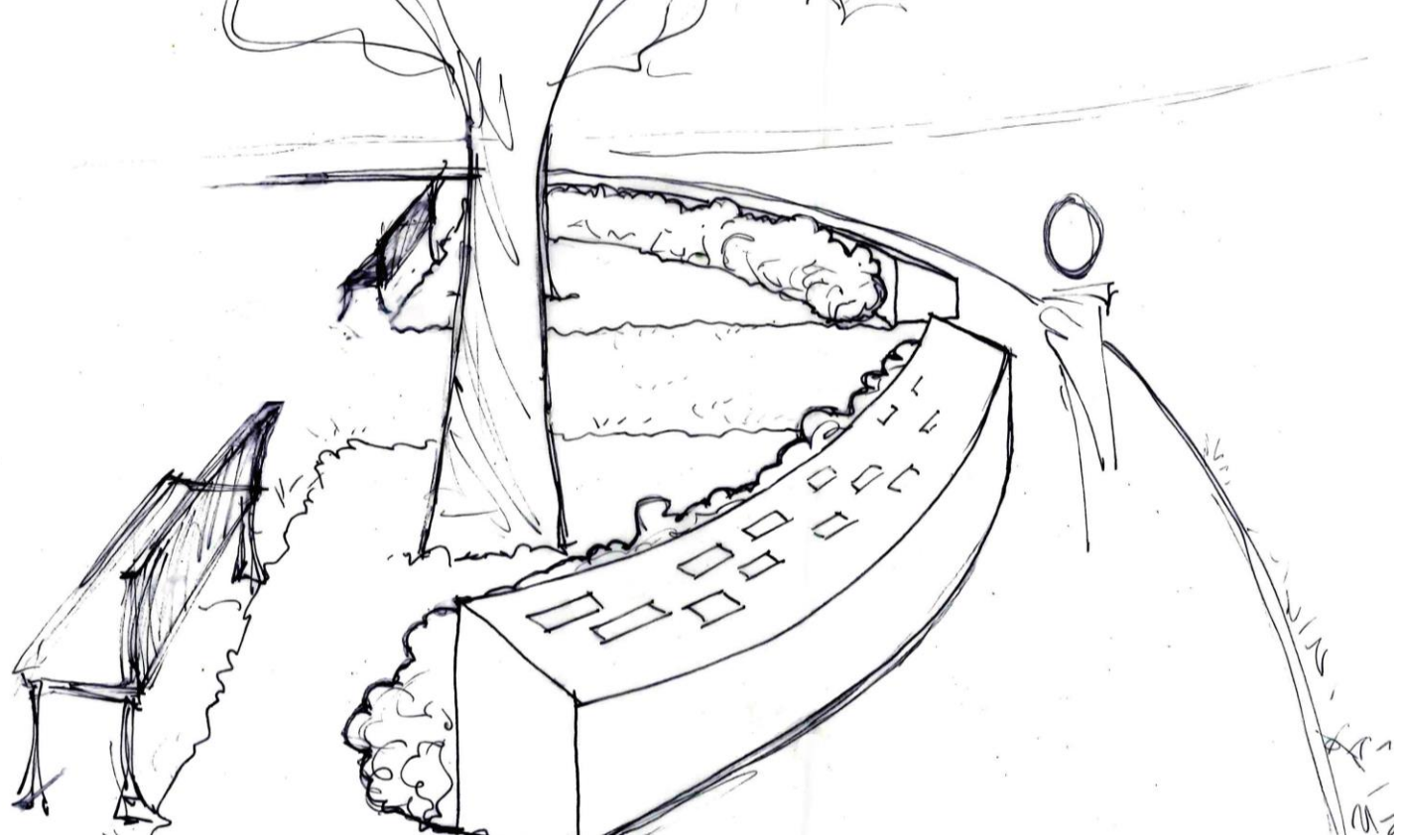
Unitarian Universalist Church of the North Hills

PASHEK  MTR

Schematic Plan



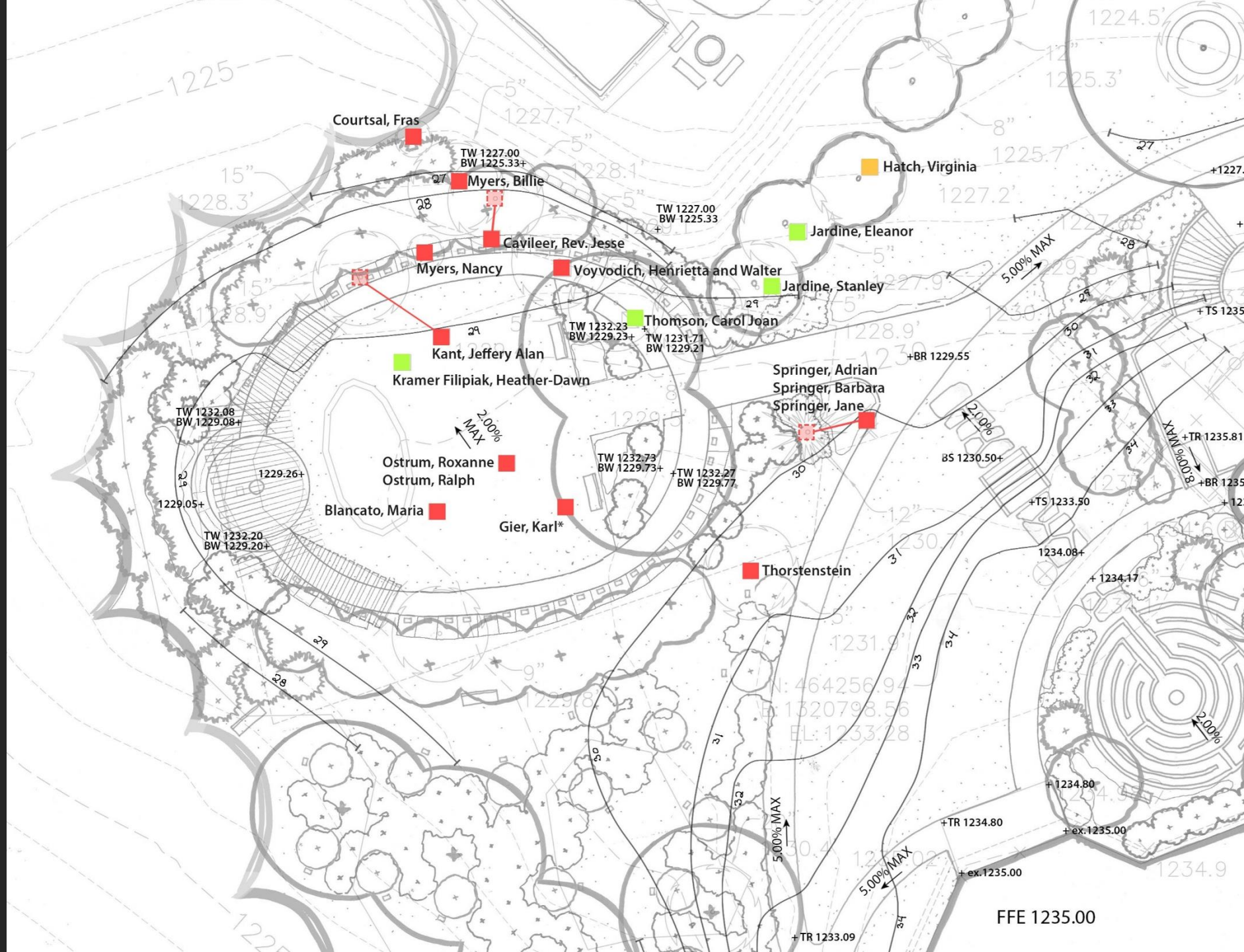
Memorial Wall



Utility and Event Plan



Grading Plan



Cost Estimate

<i>Memorial Garden</i>				
Clearing and grubbing	1	LS	\$2,500	\$ 2,500
Earthwork (for Memorial Garden, Labyrinth, and Grassy Paths)	420	CY	\$16	\$ 6,720
Erosion and Sedimentation Controls	1	LS	\$3,000	\$ 3,000
Removals Misc. (Trees, etc.)	1	LS	\$5,000	\$ 5,000
Cremain Transfer	1	LS	\$7,500	\$ 7,500
Shrubs	30	EA	\$85	\$ 2,550
Evergreen Shrubs	20	EA	\$85	\$ 1,700
Perennials	24	EA	\$25	\$ 600
Groundcover Shrub	120	EA	\$40	\$ 4,800
Shade Trees	2	EA	\$450	\$ 900
Flowering Trees	13	EA	\$350	\$ 4,550
Mulch	30	CY	\$85	\$ 2,550
Bed prep/soil amendments	400	SY	\$15	\$ 6,000
Topsoil (0.5' new for seeding)	48	CY	\$50	\$ 2,400
Seeding (Turf)	2500	SF	\$0.50	\$ 1,250
Benches (Wood and Metal)	2	EA	\$800	\$ 1,600
Patio Circle (Brick Accents)	100	SF	\$25	\$ 2,500
Patio Circle (Concrete)	10	SY	\$100	\$ 1,000
Water Line Connection	1	LS	\$6,000	\$ 6,000
Hose Bib	1	LS	\$1,000	\$ 1,000
Electric Line	1	LS	\$5,000	\$ 5,000
Electrical Outlets	3	EA	\$250	\$ 750
Lighting on Building	1	LS	\$2,500	\$ 2,500
Lighting (uplighting)	1	LS	\$7,500	\$ 7,500
Memorial Wall (CMU with Stone Veneer)	1	LS	\$9,000	\$ 9,000
Memorial Plaques (Brushed, Engraved Aluminum)	50	EA	\$500	\$ 25,000
Seat Wall (CMU with Stone Veneer)	1	LS	\$6,500	\$ 6,500
Seat Wall (Wooden Bench)	1	LS	\$3,000	\$ 3,000
Relocation of Chalise Statue	1	LS	\$2,500	\$ 2,500
Large Overhead Pergola (Cedar)	1	LS	\$24,000	\$ 24,000
Retaining Wall	1	LS	\$7,500	\$ 7,500
Trail Surface Aggregate (4' wide)	90	SY	\$25	\$ 2,250
Trail Surface Aggregate (8' wide)	35	SY	\$25	\$ 875
Trail Surface Aggregate (5' wide)	175	SY	\$25	\$ 4,375
<i>Subtotal Memorial Garden</i>				<i>\$164,870</i>